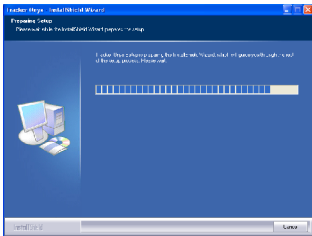
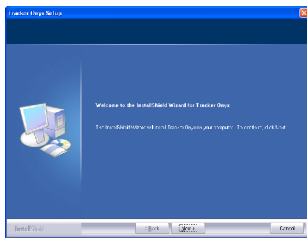


Installation of Tracker Ruby software on windows XP:

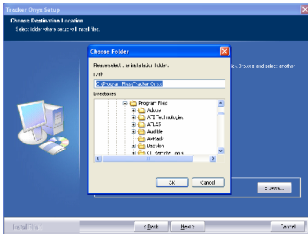


This software will be installed and operated on Windows XP and Windows Vista.

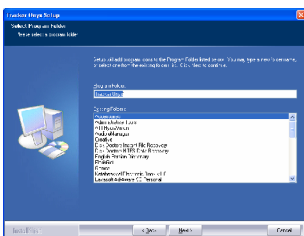
After inserting the software CD, the installation program runs automatically and the installation steps will be started.



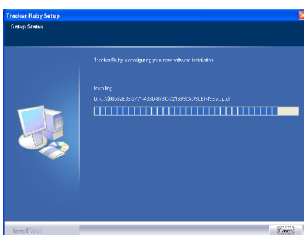
Click on button.



Choose your path for installing and then click on button.



Choose the folder for installing the program and then click on button.



At this step, the software is installing on the system. After some second the installing program will finish and you can see a shortcut of the program on your desktop with the name of *tracker*.


The guide for using Tracker Ruby:

After installing the program, there will be a shortcut on your desktop. By clicking on it a window will open by which you can enter to the program.



Enter the software serial and then the pass key, which you can have it from this site:


www.shiveh.com



By clicking on  (confirm) button, you will enter to the Program.

When the program opens you can see the map and a toolbar at the top of it by which you can zoom and track.


GPS setting:





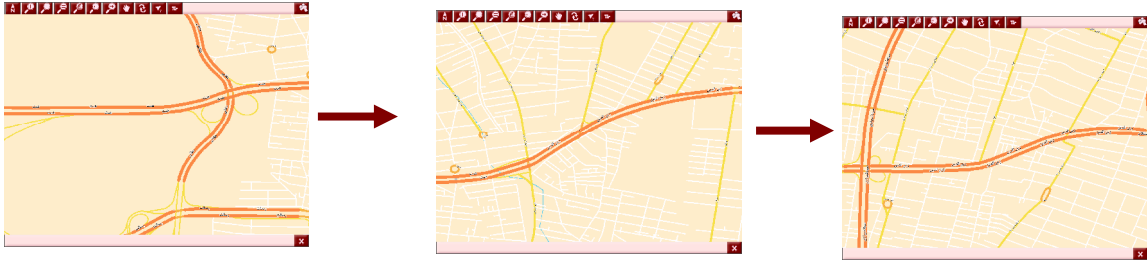
If the user wants to change the GPS setting of the map, she/he can do it by clicking on this  sign. By this act a new window will open.

By clicking on this option  the GPS will be set automatically. If the user wants to change the GPS settings, choose the mentioned port and then choose this option .


Tracking:

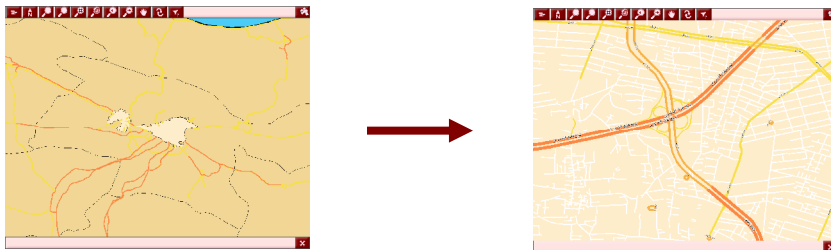
If the GPS is active, by clicking on this sign , the map will enlarge just on the user's location.

By clicking on this sign , you can see this sign also . By clicking on it, you will enter to the tracking situation.




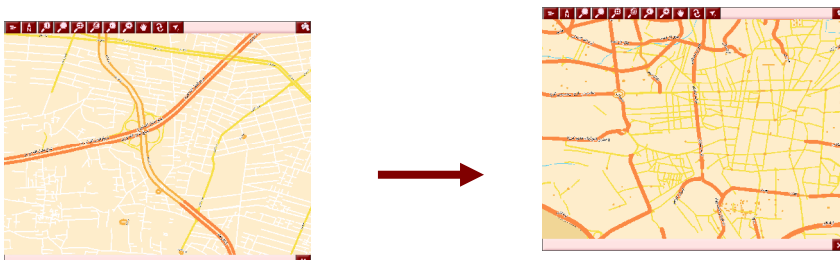
Zoom In:

By first clicking on this sign  and then clicking on map, the view of map will be closer and with more details.




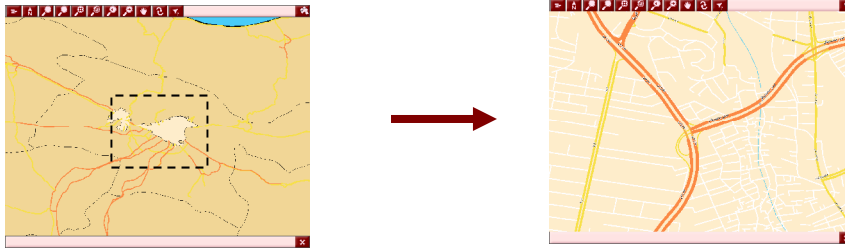
Zoom Out:

By first clicking on this sign  and then clicking on map, the view of map will be farther and with less detail.




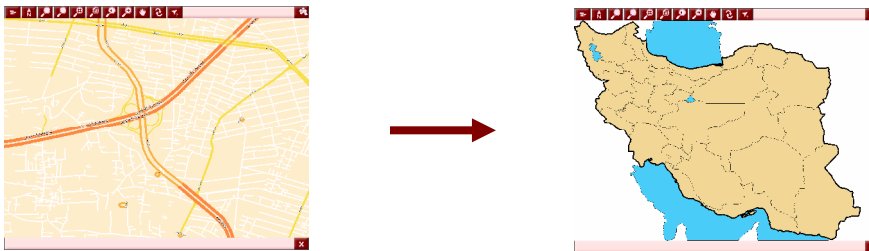
Zoom window:

By choosing this sign  and then clicking on the map, a window will open which is the enlarging window. By choosing each part of the map by this window, that part will be enlarged and closer.




Zoom extent:


By clicking on this sign , the map will change to the general view.





Previous zoom:

By clicking on this sign , you can back to the previous zoom.

Next zoom:

If you used the *previous zoom*, each time you click on this sign  you will be closed to the final zoom.

Pan:

By clicking on this sign , the mouse change in to this shape  and you can move the map.

Exiting the program:

For exiting the program you must click on this sign 